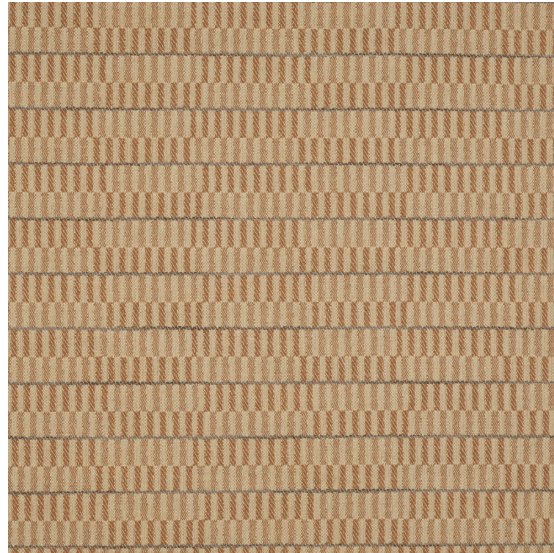




GEORGE SPENCER DESIGNS



## Rosewood

**Reference:** 3039F/04

Conjuring thoughts of keys on the piano, Axis features a tiled pattern of rectangles in alternating shades of the same colour, producing a sense of depth. Bold lines break the keys to create horizontal stripes. Crafted from wool and cotton, Axis is a thick, tactile fabric that is ideal for upholstery and drapery.

Colourway	Width	Composition	Style	Material	Repeat
Rosewood	154cm	50% Cotton, 39% Wool, 10% PA, 1% PL	Patterned	Cotton	Vertical 5.2cm / Horizontal 19.4cm