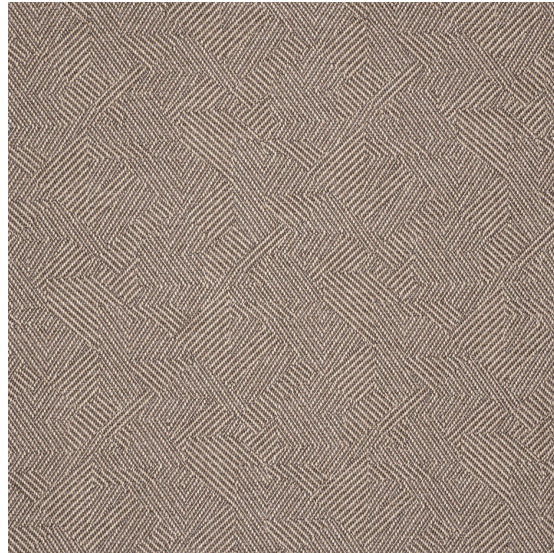




GEORGE SPENCER DESIGNS



Puzzle

Reference: 3017F/02

Al Fresco II has been created with longevity in mind; composed of robust polypropylene, it is weatherproof, fadeproof, and resistant to stains, fungi, and bacteria. Due to its high-performing composition, Al Fresco II is the ideal fabric for outdoor cushions, sun loungers, parasols and more.

Colourway	Width	Composition	Use	Style	Material
Pewter	155cm	100% Solution dyed Polypropelene	Heavy upholstery,Medium upholstery,Outdoors	Woven,Patterned,Geometric	Solution dyed Polypropelene